



Technical Information
S1035/S1075

HMF Z001392

**1035 Series**

	Rev.	No.
Technical data	18.11.09	31 09510
Lifting capacity diagram, 1035-K1	10.04.08	31 09520
Lifting capacity diagram, 1035-K2	10.04.08	31 09521
Lifting capacity diagram, 1035-K3	10.04.08	31 09522
Lifting capacity diagram, 1035-K4	10.04.08	31 09523
Lifting Capacity	10.04.08	31 09533
Dimension sketch	23.11.09	31 09540
Lifting height at loader column	10.04.08	31 09541
Centres of gravity	10.04.08	31 09575

1075 Series

Technical data	18.11.09	31 095210
Lifting capacity diagram, 1075-K1	10.04.08	31 095220
Lifting capacity diagram, 1075-K2	10.04.08	31 095221
Lifting capacity diagram, 1075-K3	10.04.08	31 095222
Lifting capacity diagram, 1075-K4	10.04.08	31 095223



TECHNICAL INFORMATION, SERIES 1035

3 | 1 | 09510

Technical Data
Loading Group B3

Side:
Page: 1(2)
Dato:
Date: 18.11.09
Datum:

Performance	Unit	1035-K1	1035-K2	1035-K3	1035-K4
Load moment	tm	9.0	8.8	8.4	8.0
Hydraulic reach	m	5.7	7.6	9.4	11.3
Hydraulic telescopic movement	m	1.8	3.6	5.4	7.2
Reach with manual extensions	m	7.3	9.2	12.9	12.9
Lifting capacity, hydraulic	kg-m	2400 – 3.8 1625 – 5.6	2300 – 3.8 1540 – 5.6 1175 – 7.4	2200 – 3.8 1460 – 5.6 1075 – 7.4 870 – 9.2	2125 – 3.8 1375 – 5.6 1000 – 7.4 780 – 9.2 650 – 11.0
Lifting capacity, manual extensions	kg-m	1160 – 7.3	860 – 9.2	650 – 11.0 550 – 12.9	550 – 12.9
Slewing torque	kgm	1390	1390	1390	1390
Slewing angle	°	400	400	400	400
Max. heel at max. load moment	°	5	5	5	5

Measures

Height above chassis when folded	mm	2130	2130	2130	2130
Width when folded	mm	2350	2350	2350	2470
Length, without extra valves *	mm	750	750	750	750
Length, with extra valves *	mm	760	760	760	760
Stabilizer spread, standard	mm	4650	4650	4650	4650
Stabilizer spread, double ext.	mm	5750	5750	5750	5750

Working speeds

Slewing speed	°/s	20	20	20	20
Lifting speed at max. reach	m/s	0.9	1.1	1.2	1.3

Weights

Standard loader, excl. stab. legs	kg	1050	1140	1230	1310
Stabilizer legs, standard	kg	173	173	173	173
Stabilizer legs, double ext.	kg	245	245	245	245
Mounting bolts	kg	53	53	53	53
Oil in base and cylinders	kg	40	40	40	40
Standard tank with oil	kg	56	56	56	56

Max. load on stabilizers (per stabilizer cylinder)

Single ext.	kN	65	65	65	65
Double ext.	kN	60	60	60	60



TECHNICAL INFORMATION, SERIES 1035

3 | 1 | 09510

Technical Data
Loading Group B3

Side:
Page:

2(2)

Dato:

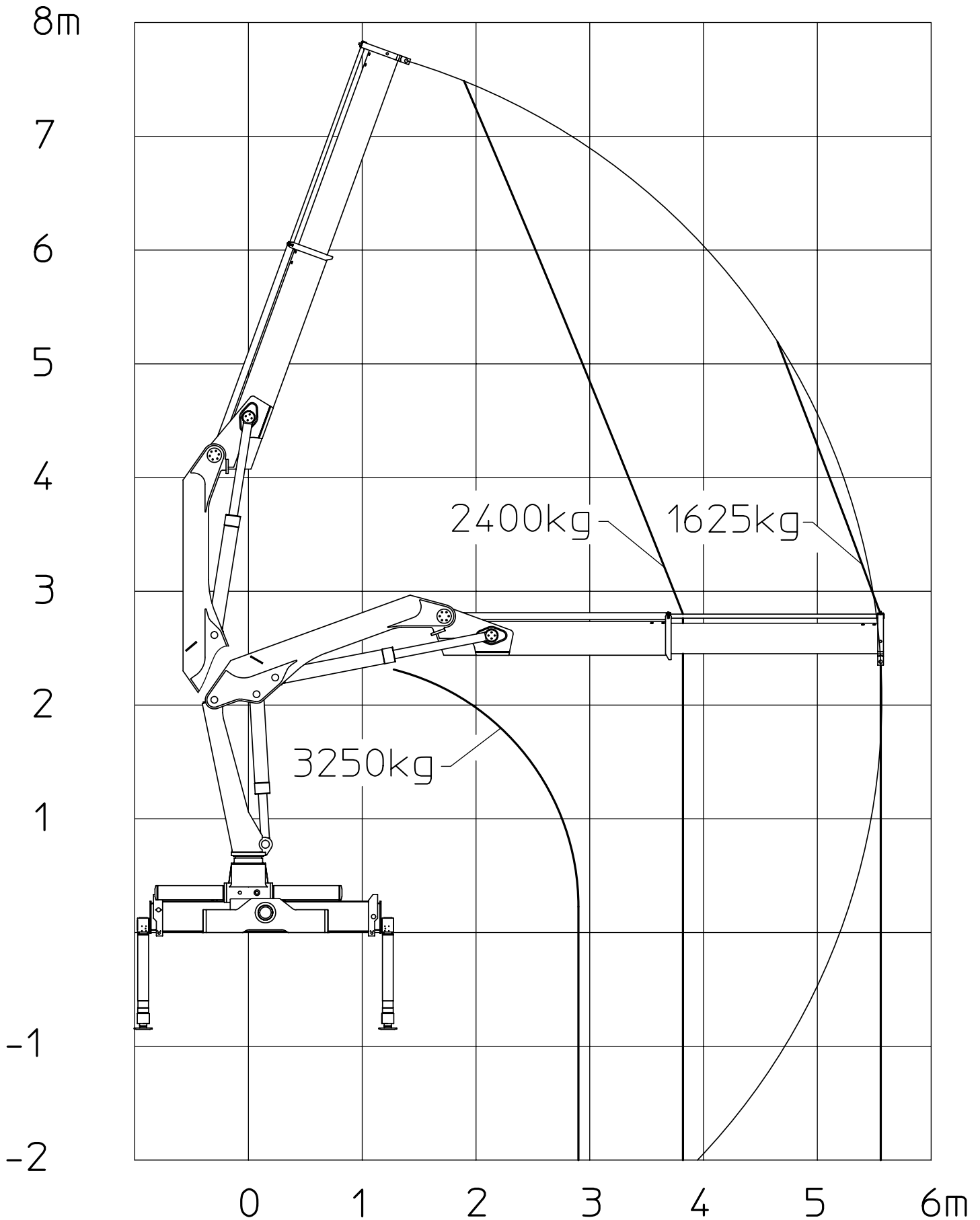
Date: 18.11.09

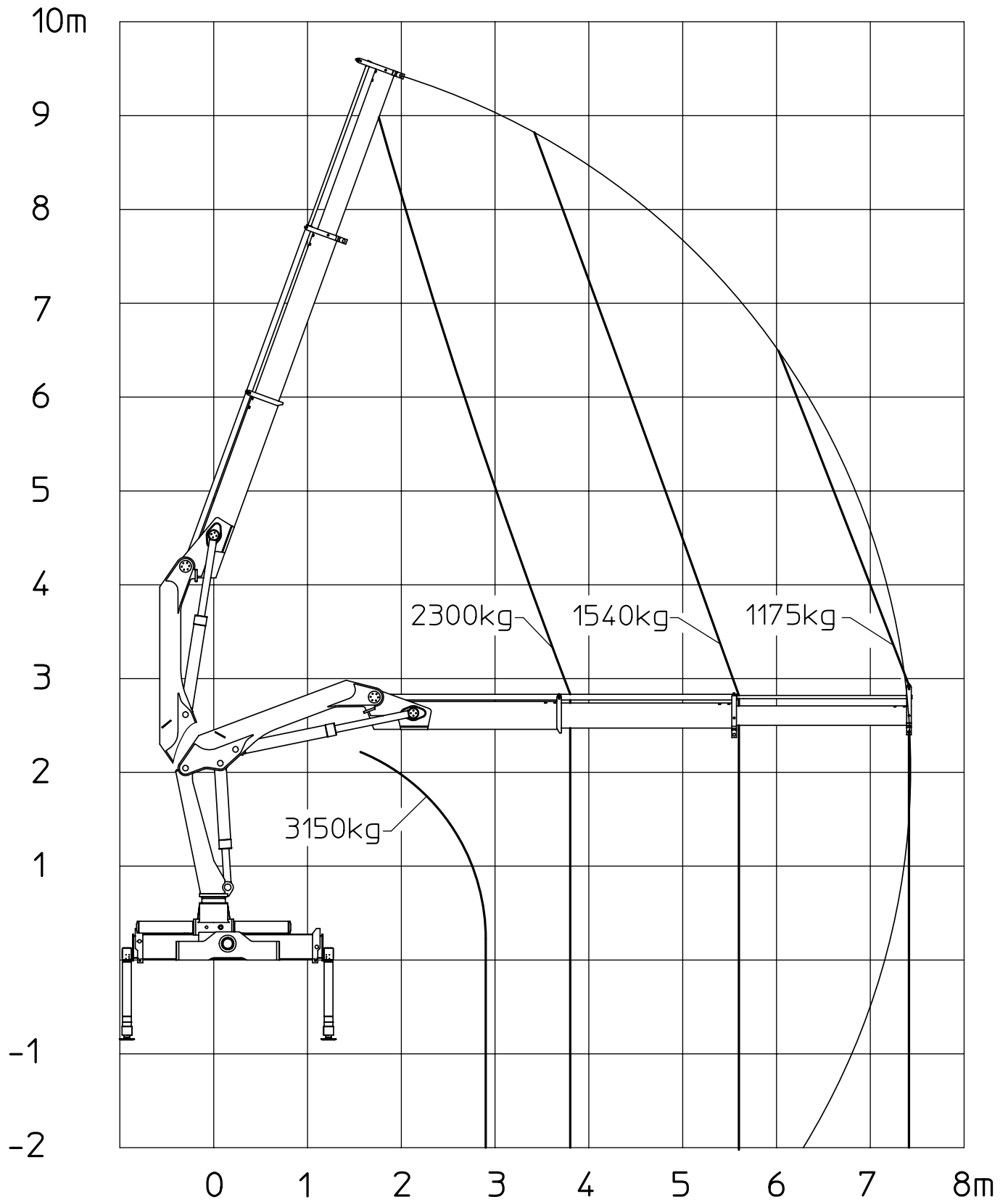
Datum:

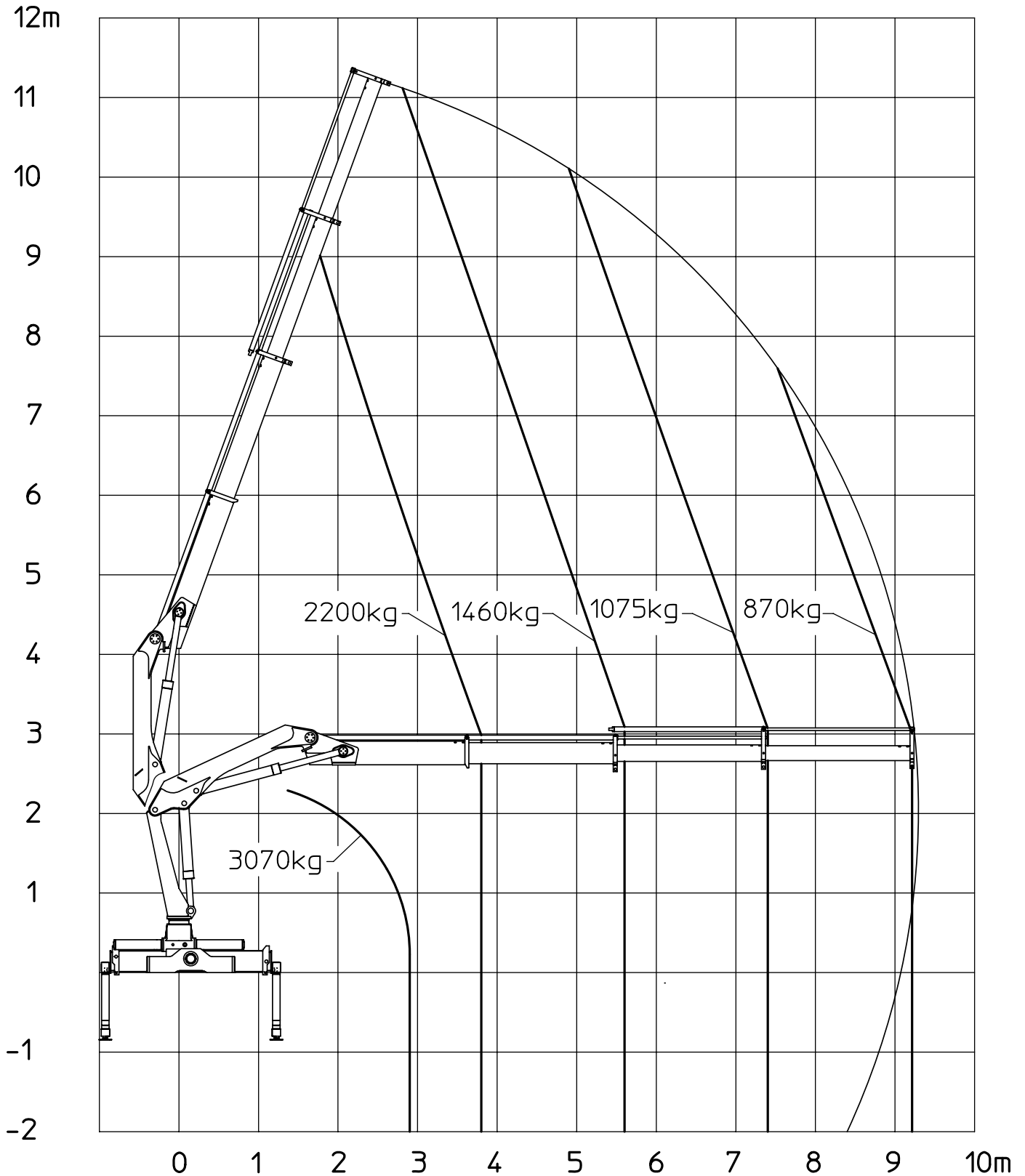
Power consumption / pump performance

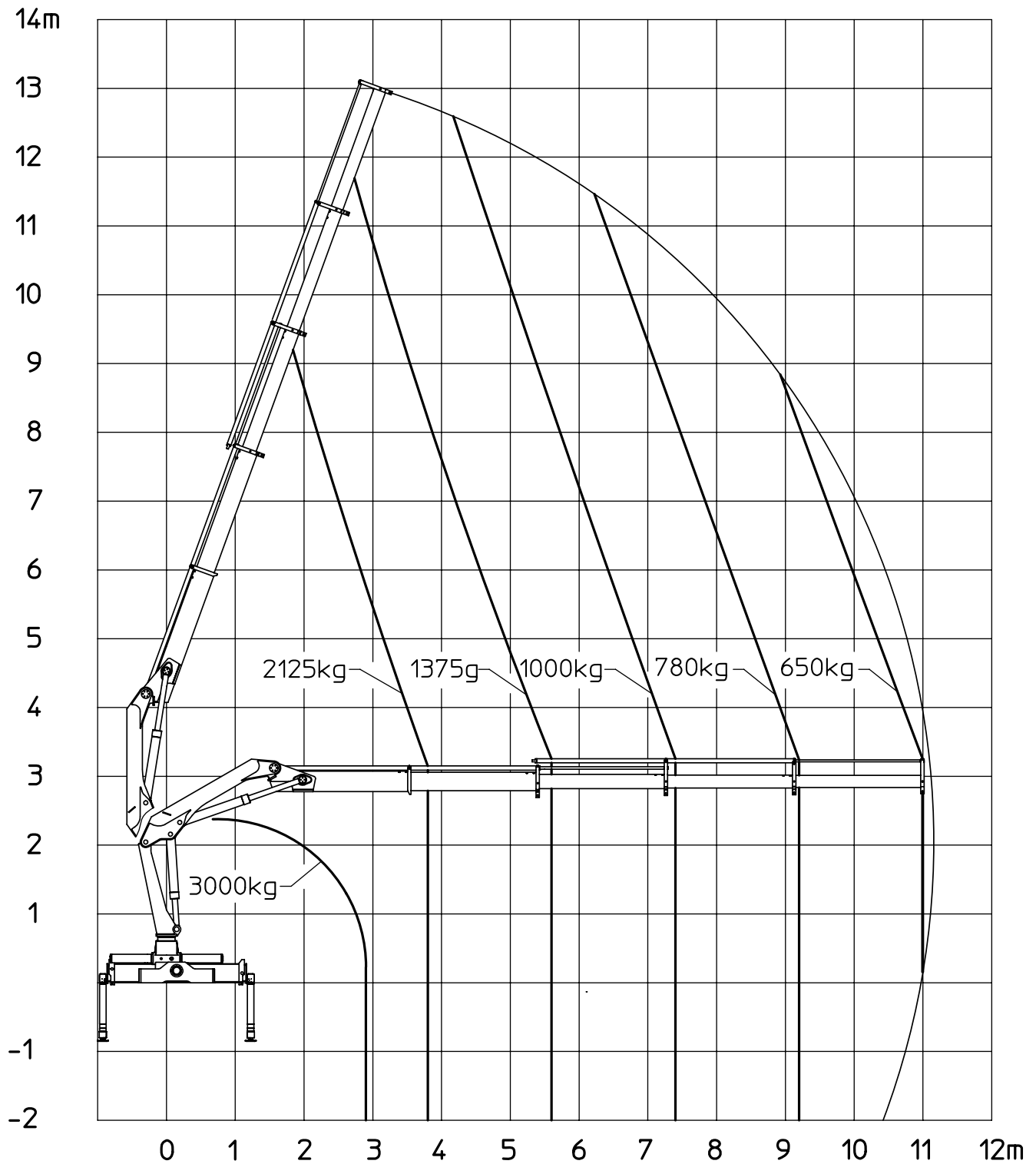
Working pressure	MPa	32	32	32	32
Pump performance	l/min	35	35	25	25
Power consumption	KW	18	18	13	13
Oil capacity in base	l	28	28	28	28
Oil capacity in separate tank	l	42	42	42	42

* Dimensions depending on equipment, please see dimension sketch.







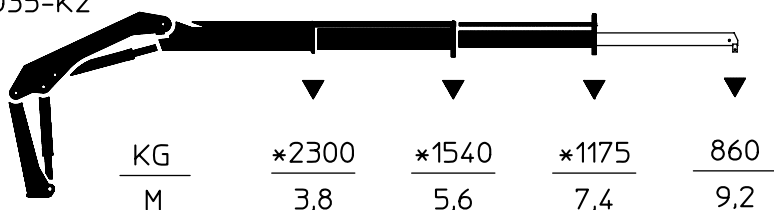




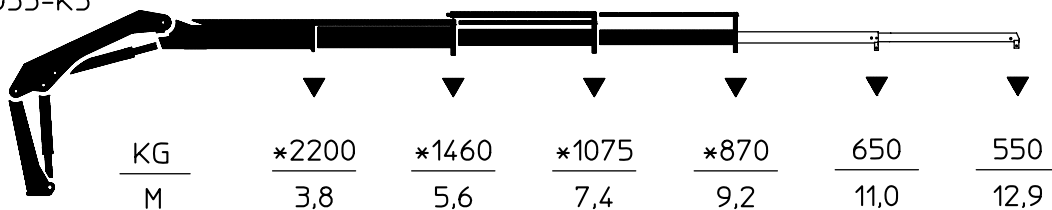
1035-K1



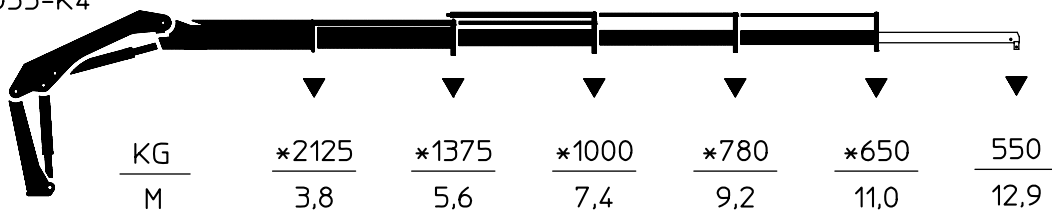
1035-K2



1035-K3



1035-K4

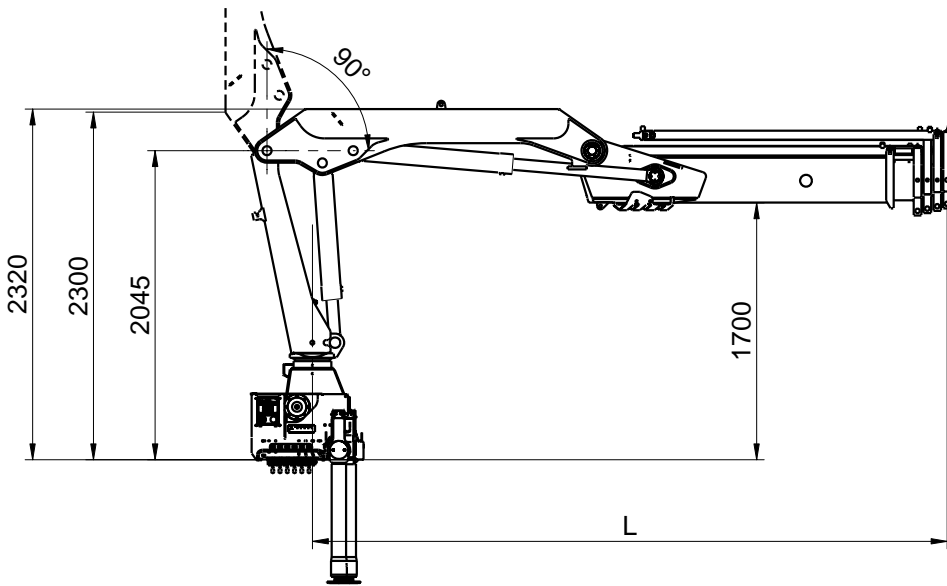


*Uden forlængerarme
*Without manual extensions
*Ohne Verlängerungen

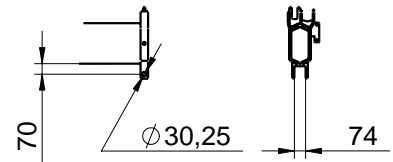
De angivne belastninger må ikke overskrides.
The loads stated, must not be exceeded.
Die angegebenen Belastungen dürfen nicht überschritten werden.

Dimension Sketch

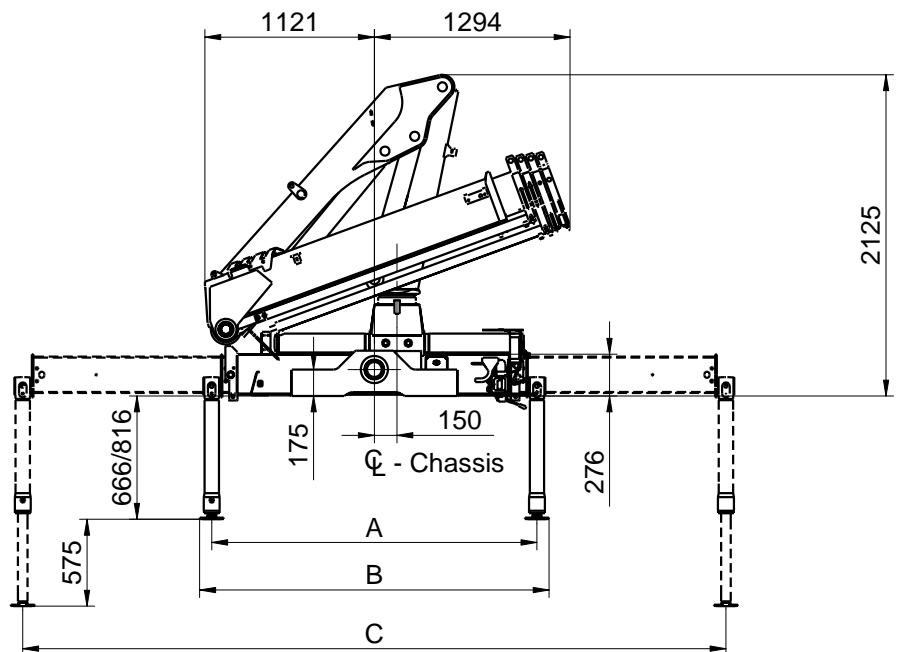
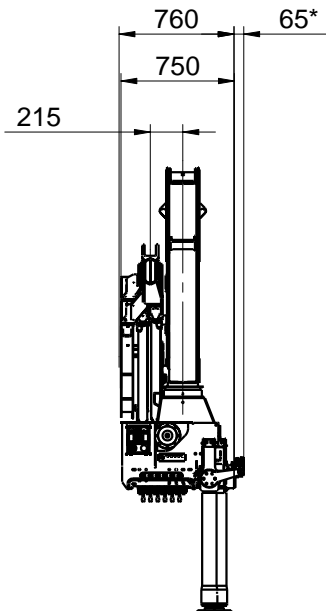
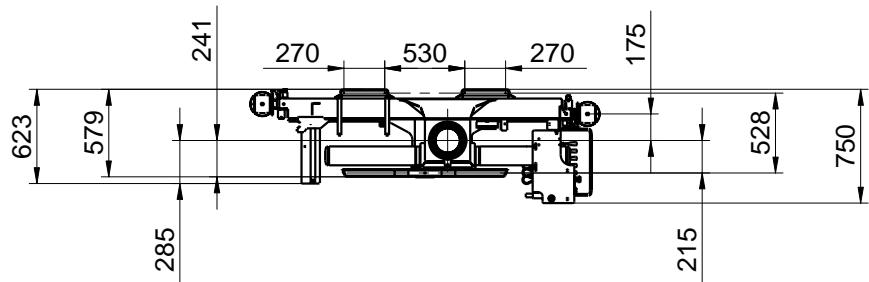
Catalogue no.	Section
3109	540
Date	Page
23-11-2009	1 (1)



K1, K2, K3, K4



	L _{min}	L _{max}
K1	3885	5685
K2	3950	7550
K3	4015	9415
K4	4080	11280



	S	D
A	2150	2220
B	2310	2380
C	4650	5750

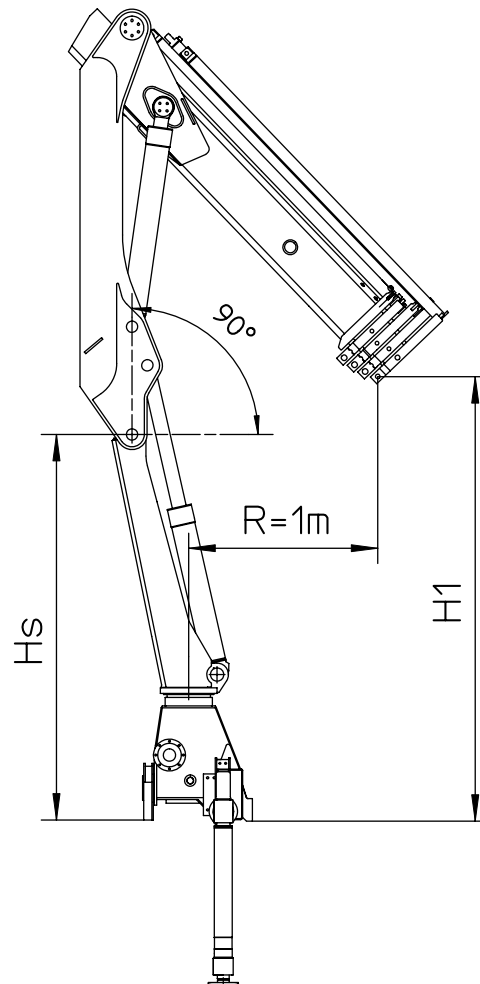
*Extra lenght, hydraulically extensible stabilizer beam.



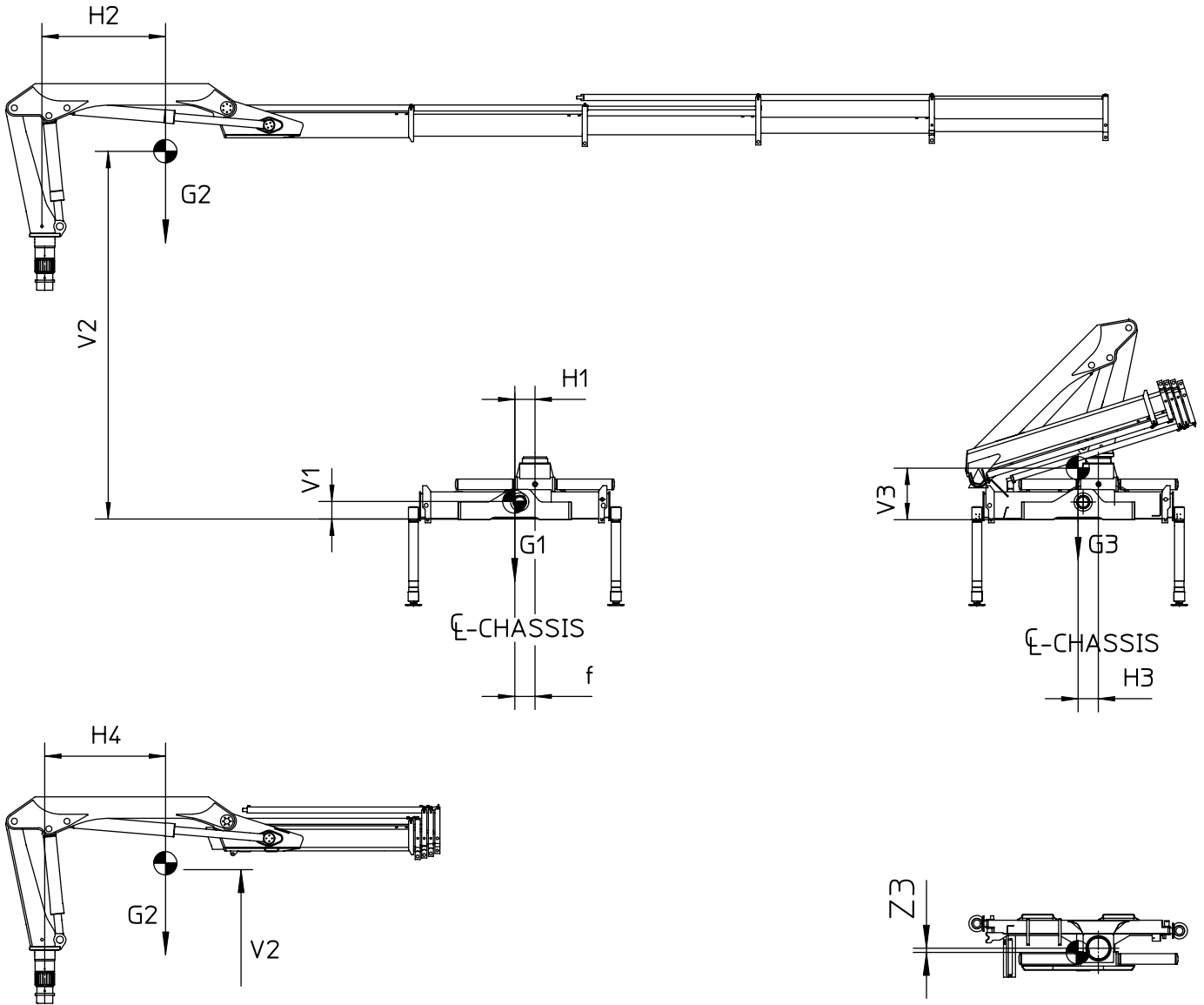


Løftehøjde ved søjle
Lifting Height at Loader column
Hubhöhe an der Säule

Side:
Page: 1 (1)
Seite:
Date:
Datum: 10.04.08



	Hs	H1
S1035K1	2,05m	2,69m
S1035K2	2,05m	2,60m
S1035K3	2,05m	2,52m
S1035K4	2,05m	2,44m



Model	V1	V2	V3	H1	H2	H3	H4	Z3	f	G1	G2	G3
1035-K1	170	1810	555	90	1345	170	1150	10	150	540	670	1210
1035-K2	170	1820	560	90	1910	170	1350	15	150	540	767	1307
1035-K3	170	1825	570	90	2570	170	1530	25	150	540	859	1399
1035-K4	170	1830	580	90	3195	170	1630	35	150	540	942	1482



TECHNICAL INFORMATION, SERIES 1075

3 | 1 | 095210

Technical Data
Loading Group B3

Side:
Page:

1(2)

Dato:

Date: 18.11.09

Datum:

Performance	Unit	1075-K1	1075-K2	1075-K3	1075-K4
Load moment	tm	9.3	9.1	8.8	8.3
Hydraulic reach	m	5.7	7.6	9.4	11.0
Hydraulic telescopic movement	m	1.8	3.6	5.4	7.2
Reach with manual extensions	m	7.3	9.2	12.9	12.9
Lifting capacity, hydraulic	kg-m	2485 – 3.8 1700 – 5.6	2375 – 3.8 1600 – 5.6 1220 – 7.4	2300 – 3.8 1525 – 5.6 1125 – 7.4 900 – 9.2	2200 – 3.8 1425 – 5.6 1040 – 7.4 815 – 9.2 675 – 11.0
Lifting capacity, manual extensions	kg-m	1160 – 7.3	860 – 9.2	650 – 11.0 550 – 12.9	550 – 12.9
Slewing torque	kgm	1390	1390	1390	1390
Slewing angle	°	400	400	400	400
Max. heel at max. load moment	°	5	5	5	5

Measures

Height above chassis when folded	mm	2130	2130	2130	2130
Width when folded	mm	2350	2350	2350	2470
Length, without extra valves *	mm	750	750	750	750
Length, with extra valves *	mm	760	760	760	760
Stabilizer spread, standard	mm	4650	4650	4650	4650
Stabilizer spread, double ext.	mm	5750	5750	5750	5750

Working speeds

Slewing speed	°/s	20	20	20	20
Lifting speed at max. reach	m/s	0.9	1.1	1.2	1.3

Weights

Standard loader, excl. stab. legs	kg	1050	1140	1230	1310
Stabilizer legs, standard	kg	173	173	173	173
Stabilizer legs, double ext.	kg	245	245	245	245
Mounting bolts	kg	53	53	53	53
Oil in base and cylinders	kg	40	40	40	40
Standard tank with oil	kg	56	56	56	56

Max. load on stabilizers (per stabilizer cylinder)

Single ext.	kN	65	65	65	65
Double ext.	kN	60	60	60	60



TECHNICAL INFORMATION, SERIES 1075

3 | 1 | 095210

Technical Data
Loading Group B3

Side:
Page:

2(2)

Dato:

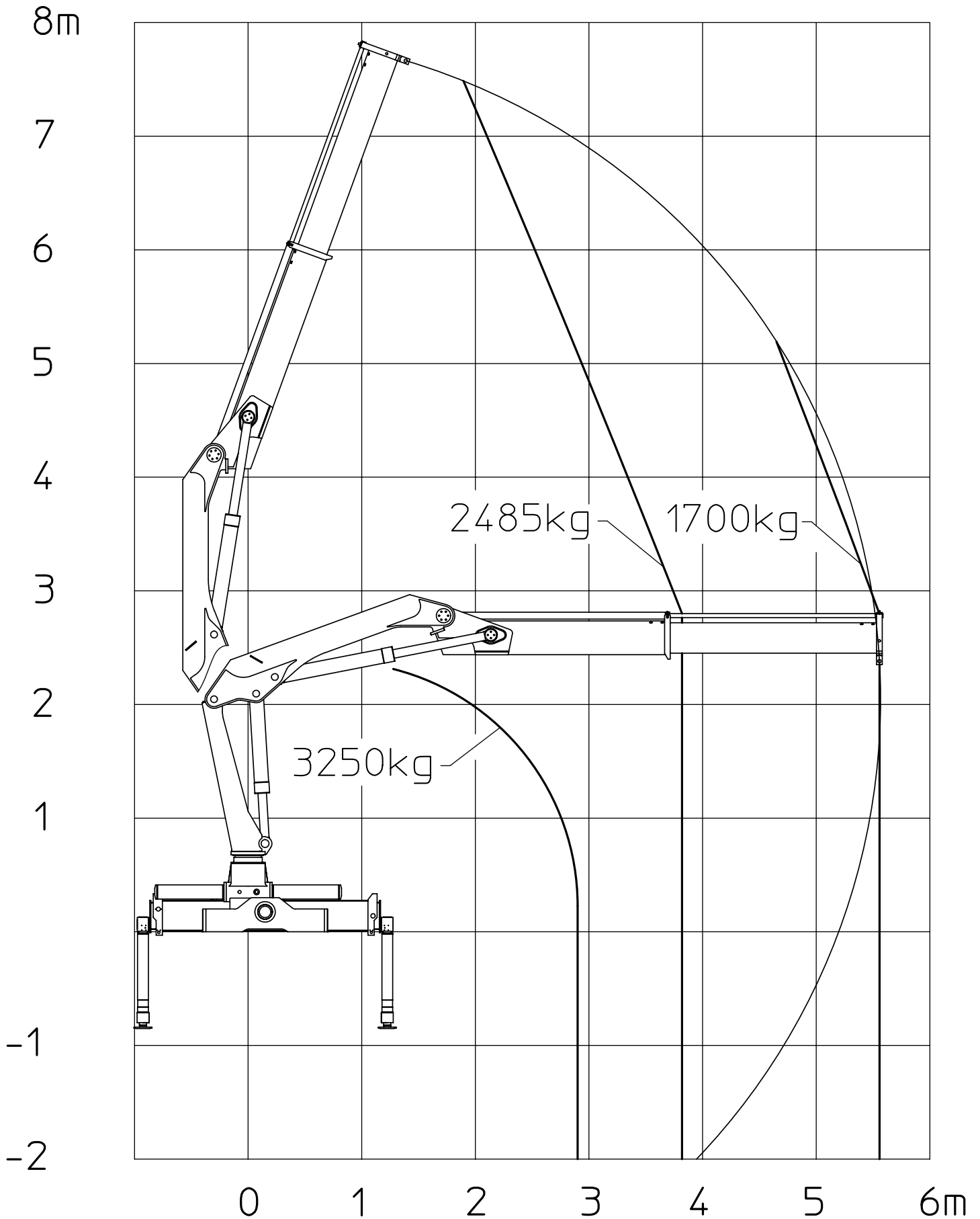
Date: 18.11.09

Datum:

Power consumption / pump performance

Working pressure	MPa	33	33	33	33
Pump performance	l/min	35	35	25	25
Power consumption	KW	18	18	13	13
Oil capacity in base	l	28	28	28	28
Oil capacity in separate tank	l	42	42	42	42

* Dimensions depending on equipment, please see dimension sketch.





Belastungsdiagram, 1075-K2
Lifting Capacity Diagram, 1075-K2
Belastungsdiagramm, 1075-K2

Side:
Page: 1 (1)
Seite:
Date:
Datum: 10.04.08

